

Catalogue of
WtE Facilities in the United States

ALABAMA



Huntsville Waste-to-Energy Facility

City: Huntsville, AL
County: Madison
Owner: City of Huntsville Solid Waste Disposal Authority
Operator: Covanta Huntsville, Inc.
Project Startup: 1990

Operating Status: Operating
Technology: Mass Burn
Design Capacity (tons per day): 690
No. of Boilers: 2
Gross Steam Capacity (Lbs/Hr): 178,620
Full-time Employees: 38
Serves Waste Needs of (people): 277,000
Certifications: VPP STAR

CALIFORNIA



Commerce Refuse-to-Energy Facility

City: Commerce, CA
County: Los Angeles
Owner: Commerce Refuse-to-Energy Authority
Operator: Sanitation Districts of Los Angeles County

Project Startup: 1987
Operating Status: Operating
Technology: Mass Burn
Design Capacity (tons per day): 360
No. of Boilers: 1
Gross Elec. Capacity (MW): 12
Full-time Employees: 39
Serves Waste Needs of (people): 1,115,000



Stanislaus County Resource Recovery Facility

City: Crow's Landing, CA
County: Stanislaus
Owner: Covanta Stanislaus, Inc.
Operator: Covanta Stanislaus, Inc.

Project Startup: 1989
Operating Status: Operating
Technology: Mass Burn
Design Capacity (tons per day): 800
No. of Boilers: 2
Gross Elec. Capacity (MW): 22.4
Full-time Employees: 47
Serves Waste Needs of (people): 521,497
Certifications: VPP STAR



Southeast Resource Recovery Facility

City: Long Beach, CA
County: Los Angeles
Owner: Southeast Resource Recovery Facility Authority
Operator: Covanta Long Beach Renewable Energy Corp.

Project Startup: 1988
Operating Status: Operating
Technology: Mass Burn
Design Capacity (tons per day): 1380
No. of Boilers: 3
Gross Elec. Capacity (MW): 36
Full-time Employees: 60
Serves Waste Needs of (people): 500,000

CONNECTICUT



Wheelabrator Bridgeport, L.P.

City: Bridgeport, CT
County: Fairfield
Owner: Wheelabrator Bridgeport, L.P.
Operator: Wheelabrator Bridgeport, L.P.

Project Startup: 1988
Operating Status: Operating
Technology: Mass Burn
Design Capacity (tons per day): 2250
No. of Boilers: 3
Gross Elec. Capacity (MW): 67
Full-time Employees: 74
Serves Waste Needs of (people): 815,807
Certifications: VPP STAR



Bristol Resource Recovery Facility

City: Bristol, CT
County: Hartford
Owner: Covanta Bristol, Inc.
Operator: Covanta Bristol, Inc.

Project Startup: 1988
Operating Status: Operating
Technology: Mass Burn
Design Capacity (tons per day): 650
No. of Boilers: 2
Gross Elec. Capacity (MW): 16.3
Full-time Employees: 40
Serves Waste Needs of (people): 373,150
Certifications: VPP STAR



CRRA Hartford Trash-to-Energy Plant

City: Hartford, CT
County: Hartford
Owner: Connecticut Resource Recovery Authority
Operator: NAES Corp.

Project Startup: 1988
Operating Status: Operating
Technology: Refuse Derived Fuel
Design Capacity (tons per day): 2850
No. of Boilers: 3
Gross Elec. Capacity (MW): 69
Full-time Employees: 133
Serves Waste Needs of (people): 1,208,813



Wheelabrator Lisbon Inc.

City: Lisbon, CT
County: New London
Owner: Eastern Connecticut Resource Recovery Authority
Operator: Wheelabrator Lisbon Inc.

Project Startup: 1995
Operating Status: Operating
Technology: Mass Burn
Design Capacity (tons per day): 500
No. of Boilers: 2
Gross Elec. Capacity (MW): 15
Full-time Employees: 33
Serves Waste Needs of (people): 225,000
Certifications: VPP STAR

CONNECTICUT (CONT.)



Southeastern Connecticut Resource Recovery Facility

City: Preston, CT
County: New London
Owner: Covanta Company of Southeastern CT
Operator: Covanta Company of Southeastern CT

Project Startup: 1991
Operating Status: Operating
Technology: Mass Burn
Design Capacity (tons per day): 689
No. of Boilers: 2
Gross Elec. Capacity (MW): 17
Full-time Employees: 43
Serves Waste Needs of (people): 248,233
Certifications: VPP STAR



Wallingford Resource Recovery Facility

City: Wallingford, CT
County: New Haven
Owner: Covanta Projects of Wallingford, L.P.
Operator: Covanta Projects of Wallingford, L.P.

Project Startup: 1989
Operating Status: Operating
Technology: Modular
Design Capacity (tons per day): 420
No. of Boilers: 3
Gross Elec. Capacity (MW): 11
Full-time Employees: 37
Serves Waste Needs of (people): 214,934
Certifications: VPP STAR

FLORIDA



Wheelabrator South Broward Inc.

City: Ft. Lauderdale, FL
County: Broward
Owner: Wheelabrator South Broward Inc.
Operator: Wheelabrator South Broward Inc.

Project Startup: 1991
Operating Status: Operating
Technology: Mass Burn
Design Capacity (tons per day): 2250
No. of Boilers: 3
Gross Elec. Capacity (MW): 66
Full-time Employees: 72
Serves Waste Needs of (people): 850,000
Certifications: VPP STAR



Lee County Resource Recovery Facility

City: Ft. Myers, FL
County: Lee
Owner: Lee County
Operator: Covanta Lee, Inc.

Project Startup: 1994 (Units 1&2); 2007 (Unit 3)
Operating Status: Operating
Technology: Mass Burn
Design Capacity (tons per day): 1836
No. of Boilers: 3
Gross Elec. Capacity (MW): 57.3
Full-time Employees: 57
Serves Waste Needs of (people): 626,502
Certifications: VPP STAR

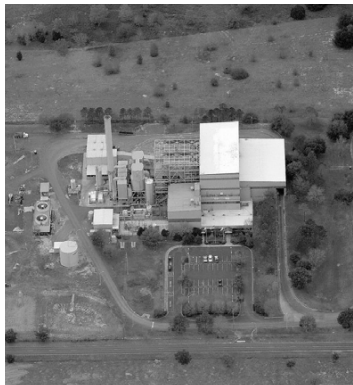
FLORIDA (CONT.)



Miami-Dade County Resource Recovery Facility

City: Miami, FL
County: Miami-Dade
Owner: Miami-Dade County
Operator: Covanta Dade Renewable Energy

Project Startup: 1982
Operating Status: Operating
Technology: Refuse Derived Fuel
Design Capacity (tons per day): 3000
No. of Boilers: 4
Gross Elec. Capacity (MW): 77
Full-time Employees: 190
Serves Waste Needs of (people): 2,531,789
Certifications: VPP STAR; ISO 14001



Lake County Resource Recovery Facility

City: Okahumpka, FL
County: Lake
Owner: Covanta Lake, Inc.
Operator: Covanta Lake, Inc.

Project Startup: 1991
Operating Status: Operating
Technology: Mass Burn
Design Capacity (tons per day): 528
No. of Boilers: 2
Gross Elec. Capacity (MW): 14.5
Full-time Employees: 36
Serves Waste Needs of (people): 288,379
Certifications: VPP STAR



Bay County Waste-to-Energy Facility

City: Panama City, FL
County: Bay
Owner: Bay County
Operator: EnGen, LLC

Project Startup: 1987
Operating Status: Operating
Technology: Refuse Derived Fuel
Design Capacity (tons per day): 500
No. of Boilers: 2
Gross Elec. Capacity (MW): 15
Full-time Employees: 36
Serves Waste Needs of (people): 169,560
Certifications: ISO 14001; ISO 18001



Wheelabrator North Broward Inc.

City: Pompano Beach, FL
County: Broward
Owner: Wheelabrator North Broward Inc.
Operator: Wheelabrator North Broward Inc.

Project Startup: 1991
Operating Status: Operating
Technology: Mass Burn
Design Capacity (tons per day): 2250
No. of Boilers: 3
Gross Elec. Capacity (MW): 68
Full-time Employees: 66
Serves Waste Needs of (people): 850,000
Certifications: VPP STAR

FLORIDA (CONT.)



Pasco County Solid Waste Resource Recovery Facility

City: Spring Hill, FL
County: Pasco
Owner: Pasco County
Operator: Covanta Pasco, Inc.

Project Startup: 1991
Operating Status: Operating
Technology: Mass Burn
Design Capacity (tons per day): 1050
No. of Boilers: 3
Gross Elec. Capacity (MW): 29.6
Full-time Employees: 40
Serves Waste Needs of (people): 439,702
Certifications: VPP STAR



Pinellas County Resource Recovery Facility

City: St. Petersburg, FL
County: Pinellas
Owner: Pinellas County
Operator: GCS Energy Recovery of Pinellas, Inc.

Project Startup: 1983
Operating Status: Operating
Technology: Mass Burn
Design Capacity (tons per day): 3150
No. of Boilers: 3
Gross Elec. Capacity (MW): 75
Full-time Employees: 70
Serves Waste Needs of (people): 1,000,000



Hillsborough County Resource Recovery Facility

City: Tampa, FL
County: Hillsborough
Owner: Hillsborough County
Operator: Covanta Hillsborough, Inc.

Project Startup: 1987 (Units 1-3); 2009 (Unit 4)
Operating Status: Operating
Technology: Mass Burn
Design Capacity (tons per day): 1800
No. of Boilers: 4
Gross Elec. Capacity (MW): 46.5
Full-time Employees: 54
Serves Waste Needs of (people): 1,234,010
Certifications: VPP STAR



McKay Bay Refuse-to-Energy Facility

City: Tampa, FL
County: Hillsborough
Owner: City of Tampa
Operator: Wheelabrator McKay Bay Inc.

Project Startup: 1985
Operating Status: Operating
Technology: Mass Burn
Design Capacity (tons per day): 1000
No. of Boilers: 4
Gross Elec. Capacity (MW): 22
Full-time Employees: 43
Serves Waste Needs of (people): 336,823
Certifications: VPP STAR

FLORIDA (CONT.)



Palm Beach Renewable Energy Facility #1

City: West Palm Beach, FL
County: Palm Beach
Owner: Solid Waste Authority of Palm Beach County
Operator: Palm Beach Resource Recovery Corp. (Babcock & Wilcox)

Project Startup: 1989
Operating Status: Operating
Technology: Refuse Derived Fuel
Design Capacity (tons per day): 2000
No. of Boilers: 2
Gross Elec. Capacity (MW): 61
Full-time Employees: 221
Serves Waste Needs of (people): 1,270,000

HAWAII



Honolulu Resource Recovery Venture

City: Kapolei, HI
County: Honolulu
Owner: City and County of Honolulu
Operator: Covanta Honolulu Resource Recovery Venture

Project Startup: 1990 (Units 1&2); 2012 (Unit 3)
Operating Status: Operating
Technology: RDF (Units 1&2); Mass Burn (Unit 3)
Design Capacity (tons per day): 3000
No. of Boilers: 3
Gross Elec. Capacity (MW): 90
Full-time Employees: 161
Serves Waste Needs of (people): 907,574
Certifications: VPP STAR

INDIANA



Indianapolis Resource Recovery Facility

City: Indianapolis, IN
County: Marion
Owner: Covanta Indianapolis, Inc.
Operator: Covanta Indianapolis, Inc.
Project Startup: 1988

Operating Status: Operating
Technology: Mass Burn
Design Capacity (tons per day): 2362
No. of Boilers: 3
Gross Steam Capacity (Lbs/Hr): 558,000
Gross Elec. Capacity (MW): 6.5
Full-time Employees: 74
Serves Waste Needs of (people): 808,466
Certifications: VPP STAR

IOWA



Arnold O. Chantland Resource Recovery Plant

City: Ames, IA
County: Story
Owner: City of Ames
Operator: City of Ames

Project Startup: 1975
Operating Status: Operating
Technology: Refuse Derived Fuel
Design Capacity (tons per day): 175
No. of Boilers: 1
Gross Elec. Capacity (MW): 4
Full-time Employees: 15
Serves Waste Needs of (people): 68,898

MAINE



Mid-Maine Waste Action Corporation

City: Auburn, ME
County: Androscoggin
Owner: Mid-Maine Waste Action Corporation
Operator: Mid-Maine Waste Action Corporation

Project Startup: 1992
Operating Status: Operating
Technology: Mass Burn
Design Capacity (tons per day): 200
No. of Boilers: 2
Gross Elec. Capacity (MW): 5
Full-time Employees: 28
Serves Waste Needs of (people): 65,000



Penobscot Energy Recovery Company

City: Orrington, ME
County: Penobscot
Owner: PERC Holdings LLC; communities
Operator: ESO CO Orrington, Inc.

Project Startup: 1988
Operating Status: Operating
Technology: Refuse Derived Fuel
Design Capacity (tons per day): 720
No. of Boilers: 2
Gross Elec. Capacity (MW): 25
Full-time Employees: 75
Serves Waste Needs of (people): 400,000



ecomaine

City: Portland, ME
County: Cumberland
Owner: ecomaine
Operator: ecomaine

Project Startup: 1988
Operating Status: Operating
Technology: Mass Burn
Design Capacity (tons per day): 550
No. of Boilers: 2
Gross Elec. Capacity (MW): 14.7
Full-time Employees: 50
Serves Waste Needs of (people): 250,000
Certifications: ISO 14001

MARYLAND



Wheelabrator Baltimore, L.P.

City: Baltimore, MD
County: Baltimore
Owner: Wheelabrator Baltimore, L.P.
Operator: Wheelabrator Baltimore, L.P.

Project Startup: 1985
Operating Status: Operating
Technology: Mass Burn
Design Capacity (tons per day): 2250
No. of Boilers: 3
Gross Steam Capacity (Lbs/Hr): 170,000
Gross Elec. Capacity (MW): 60
Full-time Employees: 68
Serves Waste Needs of (people): 1,427,232
Certifications: VPP STAR

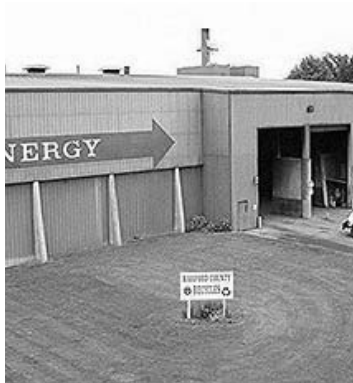
MARYLAND (CONT.)



Montgomery County Resource Recovery Facility

City: Dickerson, MD
County: Montgomery
Owner: Northeast Maryland Waste Disposal Auth.
Operator: Covanta Montgomery, Inc.

Project Startup: 1995
Operating Status: Operating
Technology: Mass Burn
Design Capacity (tons per day): 1800
No. of Boilers: 3
Gross Elec. Capacity (MW): 63.4
Full-time Employees: 49
Serves Waste Needs of (people): 971,600
Certifications: VPP STAR

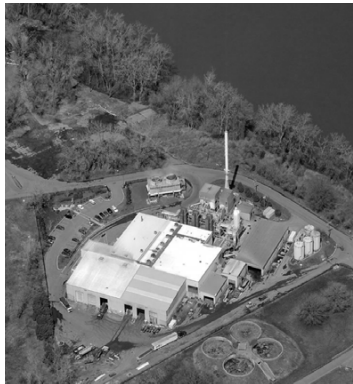
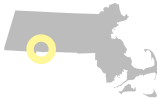


Harford Waste-to-Energy Facility

City: Joppa, MD
County: Harford
Owner: Northeast Maryland Waste Disposal Auth.
Operator: Energy Recovery Operations, Inc.

Project Startup: 1988
Operating Status: Operating
Technology: Modular
Design Capacity (tons per day): 360
No. of Boilers: 4
Gross Steam Capacity (Lbs/Hr): 72,340
Gross Elec. Capacity (MW): 1.2
Full-time Employees: 43
Serves Waste Needs of (people): 242,514
Certifications: OSHA SHARP

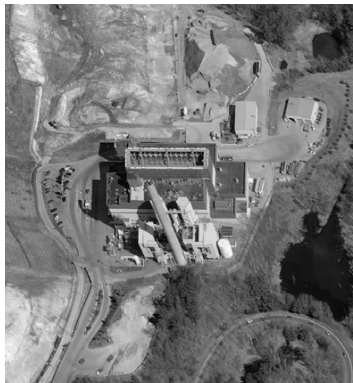
MASSACHUSETTS



Pioneer Valley Resource Recovery Facility

City: Agawam, MA
County: Hampden
Owner: Covanta Springfield, LLC
Operator: Covanta Springfield, LLC

Project Startup: 1988
Operating Status: Operating
Technology: Modular
Design Capacity (tons per day): 400
No. of Boilers: 3
Gross Elec. Capacity (MW): 9.4
Full-time Employees: 41
Serves Waste Needs of (people): 300,000
Certifications: VPP STAR



Haverhill Resource Recovery Facility

City: Haverhill, MA
County: Essex
Owner: Covanta Haverhill, Inc.
Operator: Covanta Haverhill, Inc.

Project Startup: 1989
Operating Status: Operating
Technology: Mass Burn
Design Capacity (tons per day): 1650
No. of Boilers: 2
Gross Elec. Capacity (MW): 44.6
Full-time Employees: 48
Serves Waste Needs of (people): 475,000
Certifications: VPP STAR

MASSACHUSETTS (CONT.)



Wheelabrator Millbury Inc.

City: Millbury, MA
County: Worcester
Owner: Wheelabrator Millbury Inc.
Operator: Wheelabrator Millbury Inc.

Project Startup: 1987
Operating Status: Operating
Technology: Mass Burn
Design Capacity (tons per day): 1500
No. of Boilers: 2
Gross Elec. Capacity (MW): 46
Full-time Employees: 54
Serves Waste Needs of (people): 750,000
Certifications: VPP STAR



Wheelabrator North Andover Inc.

City: North Andover, MA
County: Essex
Owner: Wheelabrator North Andover Inc.
Operator: Wheelabrator North Andover Inc.

Project Startup: 1985
Operating Status: Operating
Technology: Mass Burn
Design Capacity (tons per day): 1500
No. of Boilers: 2
Gross Elec. Capacity (MW): 40
Full-time Employees: 67
Serves Waste Needs of (people): 426,000



Pittsfield Resource Recovery Facility

City: Pittsfield, MA
County: Berkshire
Owner: Covanta Pittsfield, LLC
Operator: Covanta Pittsfield, LLC

Project Startup: 1981
Operating Status: Operating
Technology: Mass Burn
Design Capacity (tons per day): 240
No. of Boilers: 2
Gross Steam Capacity (Lbs/H r): 68,000
Gross Elec. Capacity (MW): 0.9
Full-time Employees: 29
Serves Waste Needs of (people): 70,000
Certifications: VPP STAR

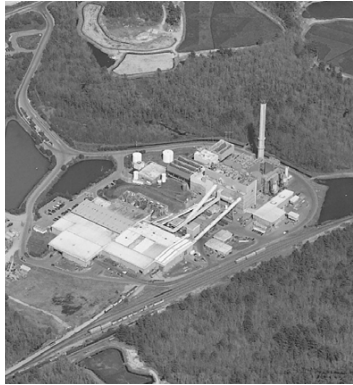


Wheelabrator Saugus Inc.

City: Saugus, MA
County: Essex
Owner: Wheelabrator Saugus Inc.
Operator: Wheelabrator Saugus Inc.

Project Startup: 1975
Operating Status: Operating
Technology: Mass Burn
Design Capacity (tons per day): 1500
No. of Boilers: 2
Gross Elec. Capacity (MW): 38
Full-time Employees: 65
Serves Waste Needs of (people): 850,000
Certifications: VPP STAR

MASSACHUSETTS (CONT.)



SEMASS Resource Recovery Facility

City: West Wareham, MA
County: Plymouth
Owner: Covanta SEMASS, L.P.
Operator: Covanta SEMASS, L.P.

Project Startup: 1989
Operating Status: Operating
Technology: Refuse Derived Fuel
Design Capacity (tons per day): 2700
No. of Boilers: 3
Gross Elec. Capacity (MW): 78
Full-time Employees: 85
Serves Waste Needs of (people): 1,000,000

MICHIGAN



Detroit Renewable Power

City: Detroit, MI
County: Wayne
Owner: Detroit Renewable Energy LLC
Operator: Detroit Renewable Energy LLC

Project Startup: 1989
Operating Status: Operating
Technology: Refuse Derived Fuel
Design Capacity (tons per day): 3300
No. of Boilers: 3
Gross Steam Capacity (Lbs/Hr): 228,300
Gross Elec. Capacity (MW): 68
Full-time Employees: 157
Serves Waste Needs of (people): 1,000,000



Kent County Waste-to-Energy Facility

City: Grand Rapids, MI
County: Kent
Owner: Kent County
Operator: Covanta Kent, Inc.

Project Startup: 1990
Operating Status: Operating
Technology: Mass Burn
Design Capacity (tons per day): 625
No. of Boilers: 2
Gross Elec. Capacity (MW): 16.8
Full-time Employees: 39
Serves Waste Needs of (people): 605,213
Certifications: VPP STAR



Jackson County Resource Recovery Facility

City: Jackson, MI
County: Jackson
Owner: Jackson County
Operator: n/a

Project Startup: 1987
Operating Status: Inactive
Technology: Mass Burn
Design Capacity (tons per day): 200
No. of Boilers: 2
Gross Steam Capacity (Lbs/Hr): 42,818
Gross Elec. Capacity (MW): 4
Full-time Employees: n/a
Serves Waste Needs of (people): n/a

MINNESOTA



Pope/Douglas Waste-to-Energy Facility

City: Alexandria, MN
County: Douglas
Owner/Operator: Pope/Douglas Solid Waste Joint Powers Board

Project Startup: 1987 (Unit 1&2) 2011 (Unit 3)
Operating Status: Operating
Technology: Mass Burn
Design Capacity (tons per day): 240
No. of Boilers: 3
Gross Steam Capacity (Lbs/Hr): 36,000
Gross Elec. Capacity (MW): 0.5
Full-time Employees: 43
Serves Waste Needs of (people): 42,000



Great River Energy—Elk River Station

City: Elk River, MN
County: Sherburne
Owner: Great River Energy
Operator: Great River Energy

Project Startup: 1989
Operating Status: Operating
Technology: Refuse Derived Fuel
Design Capacity (tons per day): 1000
No. of Boilers: 3
Gross Elec. Capacity (MW): 29
Full-time Employees: 80
Serves Waste Needs of (people): 850,000



Polk County Solid Waste Resource Recovery Facility

City: Fosston, MN
County: Polk
Owner: Polk County
Operator: Polk County

Project Startup: 1988
Operating Status: Operating
Technology: Modular
Design Capacity (tons per day): 80
No. of Boilers: 2
Gross Steam Capacity (Lbs/Hr): 21,000
Full-time Employees: 23
Serves Waste Needs of (people): 90,000



Xcel Energy—Wilmarth Plant

City: Mankato, MN
County: Blue Earth
Owner: Xcel Energy
Operator: Xcel Energy

Project Startup: 1987
Operating Status: Operating
Technology: Refuse Derived Fuel
Design Capacity (tons per day): 720
No. of Boilers: 2
Gross Elec. Capacity (MW): 19
Full-time Employees: 20

MINNESOTA (CONT.)



Hennepin Energy Resource Center

City: Minneapolis, MN
County: Hennepin
Owner: Hennepin County
Operator: Covanta Hennepin Energy Resource Co., Inc.

Project Startup: 1989
Operating Status: Operating
Technology: Mass Burn
Design Capacity (tons per day): 1212
No. of Boilers: 2
Gross Steam Capacity (Lbs/Hr): 20,000
Gross Elec Capacity (MW): 36.7
Full-time Employees: 48
Serves Waste Needs of (people): 1,156,212



Perham Resource Recovery Facility

City: Perham, MN
County: Otter Tail
Owner: Prairie Lakes Municipal Solid Waste Authority
Operator: Prairie Lakes Municipal Solid Waste Authority

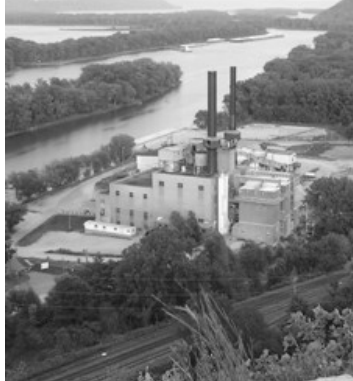
Project Startup: 1986; 2014
Operating Status: Operating
Technology: Mass Burn
Design Capacity (tons per day): 200
No. of Boilers: 2
Gross Steam Capacity (Lbs/Hr): 30,000
Gross Elec. Capacity (MW): 4.5
Full-time Employees: 15
Serves Waste Needs of (people): 75,000



Red Wing Resource Recovery Facility

City: Red Wing, MN
County: Goodhue
Owner: City of Red Wing
Operator: City of Red Wing

Project Startup: 1982
Operating Status: Inactive
Technology: Modular
Design Capacity (tons per day): 96
No. of Boilers: 2
Gross Steam Capacity (Lbs/Hr): 15,000
Full-time Employees: n/a
Serves Waste Needs of (people): 44,000



Xcel Energy—Red Wing Steam Plant

City: Red Wing, MN
County: Goodhue
Owner: Xcel Energy
Operator: Xcel Energy

Project Startup: 1987
Operating Status: Operating
Technology: Refuse Derived Fuel
Design Capacity (tons per day): 720
No. of Boilers: 2
Gross Elec. Capacity (MW): 24
Full-time Employees: 28
Serves Waste Needs of (people): 1,280,891

MINNESOTA (CONT.)



Olmsted Waste-to-Energy Facility

City: Rochester, MN
County: Olmsted
Owner: Olmsted County
Operator: Olmsted County

Project Startup: 1987 (Units 1&2) 2010 (Unit 3)
Operating Status: Operating
Technology: Mass Burn
Design Capacity (tons per day): 400
No. of Boilers: 3
Gross Steam Capacity (Lbs/Hr): 61,000
Gross Elec. Capacity (MW): 9.5
Full-time Employees: 33
Serves Waste Needs of (people): 140,000

NEW HAMPSHIRE



Wheelabrator Claremont Company, L.P.

City: Claremont, NH
County: Sullivan
Owner: Wheelabrator Claremont, L.P.
Operator: Wheelabrator Claremont, L.P.

Project Startup: 1987
Operating Status: Inactive
Technology: Mass Burn
Design Capacity (tons per day): 200
No. of Boilers: 2
Gross Elec. Capacity (MW): 5
Full-time Employees: n/a
Serves Waste Needs of (people): 73,000
Certifications: VPP STAR



Wheelabrator Concord Company, L.P.

City: Concord, NH
County: Merrimack
Owner: Wheelabrator Concord, L.P.
Operator: Wheelabrator Concord, L.P.

Project Startup: 1989
Operating Status: Operating
Technology: Mass Burn
Design Capacity (tons per day): 500
No. of Boilers: 2
Gross Elec. Capacity (MW): 14
Full-time Employees: 38
Serves Waste Needs of (people): 169,000
Certifications: VPP STAR

NEW JERSEY



Covanta Camden Energy Recovery Center

City: Camden, NJ
County: Camden
Owner: Covanta Camden GP, LLC
Operator: Covanta Camden GP, LLC

Project Startup: 1991
Operating Status: Operating
Technology: Mass Burn
Design Capacity (tons per day): 1050
No. of Boilers: 3
Gross Elec. Capacity (MW): 34
Full-time Employees: 52
Serves Waste Needs of (people): 506,420
Certifications: VPP STAR

NEW JERSEY (CONT.)



Essex County Resource Recovery Facility

City: Newark, NJ
County: Essex
Owner: Covanta Essex Company
Operator: Covanta Essex Company

Project Startup: 1990
Operating Status: Operating
Technology: Mass Burn
Design Capacity (tons per day): 2277
No. of Boilers: 3
Gross Elec. Capacity (MW): 66
Full-time Employees: 86
Serves Waste Needs of (people): 1,200,000
Certifications: VPP STAR



Covanta Warren Energy Resource Company Facility

City: Oxford, NJ
County: Warren
Owner: Covanta Warren Energy Resource Co., L.P.
Operator: Covanta Warren Energy Resource Co., L.P.

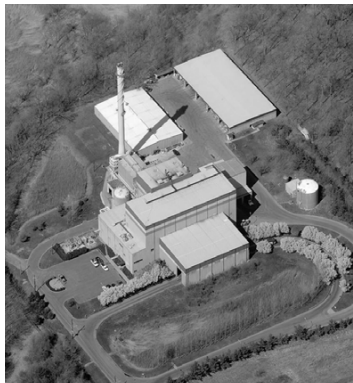
Project Startup: 1988
Operating Status: Operating
Technology: Mass Burn
Design Capacity (tons per day): 450
No. of Boilers: 2
Gross Elec. Capacity (MW): 13.5
Full-time Employees: 41
Serves Waste Needs of (people): 35,000
Certifications: VPP STAR



Union County Resource Recovery Facility

City: Rahway, NJ
County: Union
Owner: Union County Utility Authority
Operator: Covanta Union, Inc.

Project Startup: 1994
Operating Status: Operating
Technology: Mass Burn
Design Capacity (tons per day): 1440
No. of Boilers: 3
Gross Elec. Capacity (MW): 42.1
Full-time Employees: 60
Serves Waste Needs of (people): 500,000
Certifications: VPP STAR

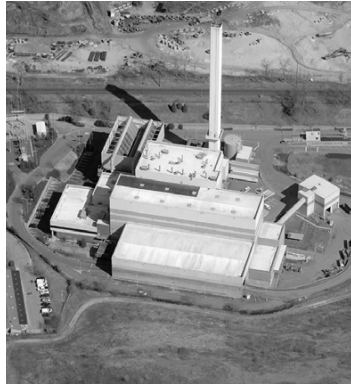


Wheelabrator Gloucester Company, L.P.

City: Westville, NJ
County: Gloucester
Owner: Wheelabrator Gloucester Company, L.P.
Operator: Wheelabrator Gloucester Company, L.P.

Project Startup: 1990
Operating Status: Operating
Technology: Mass Burn
Design Capacity (tons per day): 500
No. of Boilers: 2
Gross Elec. Capacity (MW): 14
Full-time Employees: 35
Serves Waste Needs of (people): 263,000
Certifications: VPP STAR

NEW YORK



Huntington Resource Recovery Facility

City: East Northport, NY
County: Suffolk
Owner: Covanta Huntington, Inc.
Operator: Covanta Huntington, Inc.

Project Startup: 1991
Operating Status: Operating
Technology: Mass Burn
Design Capacity (tons per day): 750
No. of Boilers: 3
Gross Elec. Capacity (MW): 24.3
Full-time Employees: 45
Serves Waste Needs of (people): 345,000
Certifications: VPP STAR



Oswego County Energy Recovery Facility

City: Fulton, NY
County: Oswego
Owner: Oswego County
Operator: Oswego County

Project Startup: 1986
Operating Status: Operating
Technology: Modular
Design Capacity (tons per day): 200
No. of Boilers: 2
Gross Steam Capacity (Lbs/Hr): 60,000
Gross Elec. Capacity (MW): 4
Full-time Employees: 28
Serves Waste Needs of (people): 126,000



Wheelabrator Hudson Falls L.L.C.

City: Hudson Falls, NY
County: Washington
US Congressional District: 21st
Owner: Wheelabrator Hudson Falls L.L.C.
Operator: Wheelabrator Hudson Falls L.L.C.

Project Startup: 1991
Operating Status: Operating
Technology: Mass Burn
Design Capacity (tons per day): 500
No. of Boilers: 2
Gross Elec. Capacity (MW): 15
Full-time Employees: 37
Serves Waste Needs of (people): 345,966
Certifications: VPP STAR



Onondaga County Resource Recovery Facility

City: Jamesville, NY
County: Onondaga
Owner: Covanta Onondaga, L.P.
Operator: Covanta Onondaga, L.P.

Project Startup: 1995
Operating Status: Operating
Technology: Mass Burn
Design Capacity (tons per day): 990
No. of Boilers: 3
Gross Elec. Capacity (MW): 39.2
Full-time Employees: 44
Serves Waste Needs of (people): 470,000
Certifications: VPP STAR

NEW YORK (CONT.)



Niagara Resource Recovery Facility

City: Niagara Falls, NY
County: Niagara
Owner: Covanta Niagara Company
Operator: Covanta Niagara Company

Project Startup: 1980
Operating Status: Operating
Technology: Mass Burn
Design Capacity (tons per day): 2250
No. of Boilers: 2
Gross Steam Capacity (Lbs/Hr): 470,000
Gross Elec Capacity (MW): 32
Full-time Employees: 87
Serves Waste Needs of (people): 900,000
Certifications: VPP STAR, ISO 14001



Wheelabrator Westchester, L.P.

City: Peekskill, NY
County: Westchester
Owner: Wheelabrator Westchester, L.P.
Operator: Wheelabrator Westchester, L.P.

Project Startup: 1984
Operating Status: Operating
Technology: Mass Burn
Design Capacity (tons per day): 2250
No. of Boilers: 3
Gross Steam Capacity (Lbs/Hr): 18,000
Gross Elec. Capacity (MW): 60
Full-time Employees: 68
Serves Waste Needs of (people): 855,000
Certifications: VPP STAR



Dutchess County Resource Recovery Facility

City: Poughkeepsie, NY
County: Dutchess
Owner: Dutchess Co. Resource Recovery Agency
Operator: Covanta Hudson Valley Renewable Energy LLC

Project Startup: 1987
Operating Status: Operating
Technology: Mass Burn
Design Capacity (tons per day): 450
No. of Boilers: 2
Gross Elec. Capacity (MW): 9.8
Full-time Employees: 44
Serves Waste Needs of (people): 293,562
Certifications: VPP STAR



MacArthur Waste-to-Energy Facility

City: Ronkonkoma, NY
County: Suffolk
Owner: Islip Resource Recovery Agency
Operator: Covanta MacArthur Renewable Energy, Inc.

Project Startup: 1990
Operating Status: Operating
Technology: Mass Burn
Design Capacity (tons per day): 486
No. of Boilers: 2
Gross Elec. Capacity (MW): 12
Full-time Employees: 42
Serves Waste Needs of (people): 301,000
Certifications: VPP STAR; ISO 14001

NEW YORK (CONT.)



Babylon Resource Recovery Facility

City: West Babylon, NY
County: Suffolk
Owner: Covanta Babylon, Inc.
Operator: Covanta Babylon, Inc.

Project Startup: 1989
Operating Status: Operating
Technology: Mass Burn
Design Capacity (tons per day): 750
No. of Boilers: 2
Gross Elec. Capacity (MW): 16.8
Full-time Employees: 45
Serves Waste Needs of (people): 435,000

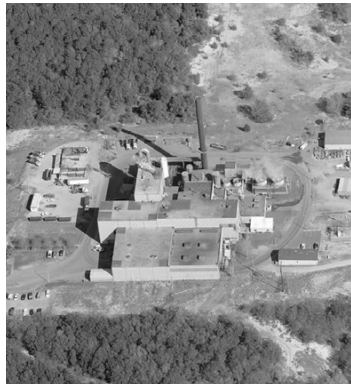


Covanta Hempstead

City: Westbury, NY
County: Nassau
Owner: Covanta Hempstead Co.
Operator: Covanta Hempstead Co.

Project Startup: 1989
Operating Status: Operating
Technology: Mass Burn
Design Capacity (tons per day): 2505
No. of Boilers: 3
Gross Elec. Capacity (MW): 72
Full-time Employees: 82
Serves Waste Needs of (people): 1,000,000
Certifications: VPP STAR

NORTH CAROLINA



New Hanover County — WASTEC

City: Wilmington, NC
County: New Hanover
Owner: New Hanover County
Operator: New Hanover County

Project Startup: 1984(Units 1&2); 1991 (Unit 3)
Operating Status: Inactive
Technology: Mass Burn
Design Capacity (tons per day): 500
No. of Boilers: 3
Gross Elec. Capacity (MW): 10.5
Full-time Employees: n/a
Serves Waste Needs of (people): 200,000

OKLAHOMA



Walter B. Hall Resource Recovery Facility

City: Tulsa, OK
County: Tulsa
Owner: Covanta Tulsa Renewable Energy, LLC
Operator: Covanta Tulsa Renewable Energy, LLC

Project Startup: 1986; 2011 (CLEERGAS retrofit)
Operating Status: Operating
Technology: Mass Burn (Units 1&2); CLEERGAS® (Unit 3)
Design Capacity (tons per day): 1125
No. of Boilers: 3
Gross Steam Capacity (Lbs/Hr): 80,000
Gross Elec. Capacity (MW): 16.8
Full-time Employees: 42
Serves Waste Needs of (people): 388,300

OREGON



Marion County Solid Waste-to-Energy Facility

City: Brooks, OR
County: Marion
Owner: Covanta Marion, Inc.
Operator: Covanta Marion, Inc.

Project Startup: 1987
Operating Status: Operating
Technology: Mass Burn
Design Capacity (tons per day): 550
No. of Boilers: 2
Gross Elec. Capacity (MW): 13.1
Full-time Employees: 38
Serves Waste Needs of (people): 314,866
Certifications: VPP STAR

PENNSYLVANIA



Lancaster County Resource Recovery Facility

City: Bainbridge, PA
County: Lancaster
Owner: Lancaster Co. Solid Waste Mgmt. Authority
Operator: Covanta Lancaster, Inc.

Project Startup: 1991
Operating Status: Operating
Technology: Mass Burn
Design Capacity (tons per day): 1200
No. of Boilers: 3
Gross Elec. Capacity (MW): 33.1
Full-time Employees: 47
Serves Waste Needs of (people): 420,000
Certifications: VPP STAR



Delaware Valley Resource Recovery Facility

City: Chester, PA
County: Delaware
Owner: Covanta Delaware Valley, L.P.
Operator: Covanta Delaware Valley, L.P.

Project Startup: 1992
Operating Status: Operating
Technology: Mass Burn
Design Capacity (tons per day): 2688
No. of Boilers: 6
Gross Elec. Capacity (MW): 87
Full-time Employees: 106
Serves Waste Needs of (people): 1,000,000
Certifications: VPP STAR



Covanta Plymouth Renewable Energy

City: Conshohocken, PA
County: Montgomery
Owner: Covanta Plymouth Renewable Energy, L.P.
Operator: Covanta Plymouth Renewable Energy, L.P.

Project Startup: 1992
Operating Status: Operating
Technology: Mass Burn
Design Capacity (tons per day): 1216
No. of Boilers: 2
Gross Elec. Capacity (MW): 32
Full-time Employees: 46
Serves Waste Needs of (people): 421,786
Certifications: VPP STAR; ISO 14001

PENNSYLVANIA (CONT.)



Susquehanna Resource Management Complex

City: Harrisburg, PA
County: Dauphin
Owner: Lancaster Co. Solid Waste Mgmt. Authority
Operator: Covanta Harrisburg, Inc.

Project Startup: 1972; 2006 (retrofit)
Operating Status: Operating
Technology: Mass Burn
Design Capacity (tons per day): 800
No. of Boilers: 3
Gross Elec. Capacity (MW): 20.8
Full-time Employees: 47
Serves Waste Needs of (people): 100,000



Wheelabrator Falls Inc.

City: Morrisville, PA
County: Bucks
Owner: Wheelabrator Falls Inc.
Operator: Wheelabrator Falls Inc.

Project Startup: 1994
Operating Status: Operating
Technology: Mass Burn
Design Capacity (tons per day): 1500
No. of Boilers: 2
Gross Elec. Capacity (MW): 53
Full-time Employees: 56
Serves Waste Needs of (people): 550,000
Certifications: VPP STAR



York County Resource Recovery Center

City: York, PA
County: York
Owner: York County Solid Waste Authority
Operator: Covanta York Renewable Energy LLC

Project Startup: 1989
Operating Status: Operating
Technology: Mass Burn
Design Capacity (tons per day): 1344
No. of Boilers: 3
Gross Elec. Capacity (MW): 42
Full-time Employees: 52
Serves Waste Needs of (people): 450,000
Certifications: VPP STAR; ISO 14001

UTAH



Davis Energy Recovery Facility

City: Layton, UT
County: Davis
Owner: Wasatch Integrated Waste Management District
Operator: Wasatch Integrated Waste Management District

Project Startup: 1988
Operating Status: Operating
Technology: Mass Burn
Design Capacity (tons per day): 420
No. of Boilers: 2
Gross Steam Capacity (Lbs/Hr): 105,000
Gross Elec. Capacity (MW): 1.6
Full-time Employees: 40
Serves Waste Needs of (people): 217,000

VIRGINIA



Alexandria/Arlington Resource Recovery Facility

City: Alexandria, VA
County: n/a
Owner: Covanta Arlington/Alexandria, Inc.
Operator: Covanta Arlington/Alexandria, Inc.

Project Startup: 1988
Operating Status: Operating
Technology: Mass Burn
Design Capacity (tons per day): 975
No. of Boilers: 3
Gross Elec. Capacity (MW): 22
Full-time Employees: 48
Serves Waste Needs of (people): 600,000
Certifications: VPP STAR



Hampton-NASA Steam Plant

City: Hampton, VA
County: n/a
Owner: NASA & City of Hampton
Operator: City of Hampton

Project Startup: 1980
Operating Status: Operating
Technology: Mass Burn
Design Capacity (tons per day): 240
No. of Boilers: 2
Gross Steam Capacity (Lbs/Hr): 66,000
Full-time Employees: 38
Serves Waste Needs of (people): 180,000



Harrisonburg Resource Recovery Facility

City: Harrisonburg, VA
County: n/a
Owner: City of Harrisonburg
Operator: City of Harrisonburg

Project Startup: 1982; 2004 (retrofit)
Operating Status: Operating
Technology: Mass Burn
Design Capacity (tons per day): 200
No. of Boilers: 2
Gross Steam Capacity (Lbs/Hr): 57,000
Gross Elec. Capacity (MW): 2.5
Full-time Employees: 31
Serves Waste Needs of (people): 122,000



I-95 Energy/Resource Recovery Facility

City: Lorton, VA
County: Fairfax
Owner: Covanta Fairfax, Inc.
Operator: Covanta Fairfax, Inc.

Project Startup: 1990
Operating Status: Operating
Technology: Mass Burn
Design Capacity (tons per day): 3000
No. of Boilers: 4
Gross Elec. Capacity (MW): 93
Full-time Employees: 75
Serves Waste Needs of (people): 1,651,647
Certifications: VPP STAR

VIRGINIA (CONT.)



Wheelabrator Portsmouth Inc.

City: Portsmouth, VA
County: n/a
Owner: Wheelabrator Portsmouth Inc.
Operator: Wheelabrator Portsmouth Inc.

Project Startup: 1988
Operating Status: Operating
Technology: Refuse Derived Fuel
Design Capacity (tons per day): 2000
No. of Boilers: 4
Gross Steam Capacity (Lbs/Hr): 322,000
Gross Elec. Capacity (MW): 60
Full-time Employees: 164
Serves Waste Needs of (people): 1,127,790

WASHINGTON



Wheelabrator Spokane Inc.

City: Spokane, WA
County: Spokane
Owner: City of Spokane
Operator: Wheelabrator Spokane Inc.

Project Startup: 1991
Operating Status: Operating
Technology: Mass Burn
Design Capacity (tons per day): 800
No. of Boilers: 2
Gross Elec. Capacity (MW): 26
Full-time Employees: 40
Serves Waste Needs of (people): 423,347
Certifications: VPP STAR

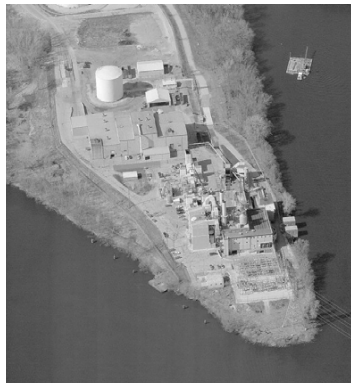
WISCONSIN



Barron County Waste-to-Energy & Recycling Facility

City: Almena, WI
County: Barron
Owner: Barron County
Operator: ZAC, Inc.

Project Startup: 1986
Operating Status: Operating
Technology: Modular
Design Capacity (tons per day): 90
No. of Boilers: 2
Gross Steam Capacity (Lbs/Hr): 10,000
Gross Elec. Capacity (MW): 2
Full-time Employees: 18
Serves Waste Needs of (people): 75,000



Xcel Energy—French Island Generating Station

City: La Crosse, WI
County: La Crosse
Owner: Xcel Energy
Operator: Xcel Energy

Project Startup: 1988
Operating Status: Operating
Technology: RDF (co-fired 50/50 with coal)
Design Capacity (tons per day): 400 (RDF)
No. of Boilers: 2
Gross Elec. Capacity (MW): 28
Full-time Employees: 32
Serves Waste Needs of (people): 250,000